



Coventry and Warwickshire Society of Artists

## Brushstrokes Bulletin

Editor - Cliff Vince Spring 2024



### Editorial - Cliff Vince

Hi, welcome to February's edition of Brushstrokes.

Well, what a kick off to the new year with the CASE at The Herbert. It was amazing to see the exhibition making a great impact in the No1 gallery. Especially great presentation of 2D and 3D Art. The quality of all the exhibits, truly a superb exhibition displaying the high quality of artistic skill in the Coventry and Warwickshire area.

Now I must say a big thank you to Susan Moore who has been planning this for sometime (like 2 years) and to get the larger exhibition space which has enabled other Art groups in the area to be included too, what a great bonus. I've included a few words from Susan about the work behind the scenes of the in the piece on the setting up of exhibition.

This month's edition has a number of opportunities to promote or take part in exhibitions and workshops for the coming year. Plus, Exhibitions taking place in the next few months.

I will be doing a number of workshops later in the year. Also, I will be in my workshop regularly on Mondays, so anyone interested in sculpting in stone or wood, get in touch, but be aware I will be concentrating on my own work and will have limited time for support. Also, the environment will be a little bit aggressive with a number of noisy tools and dust, but I have all the PPE required and PL Insurance

I have included some very interesting exhibition reviews from Trevor Bendell and exhibiting opportunities. Thanks Cliff

### Local Exhibitions

Criterion Theatre <https://www.criteriontheatre.co.uk/>

CWSA Virtual Exhibition online still running! The link to our CWSA Virtual Exhibition on YouTube is now <https://youtu.be/SwbeemOL-4U> Please click, watch, share and buy!

If you have visited a recent /current art exhibition, please write a short review and send it to our News Editor, Cliff Vince for the next edition of 'Brushstrokes' Email: [313vince@gmail.com](mailto:313vince@gmail.com)

### At the Royal Pump Rooms – The Open 2024

Friday 2 February 2024 – Sunday 12 May

We are delighted to present the Open 2024, an exciting exhibition providing a showcase for artists living and working in the West Midlands. Last seen in 2022, the Open has been a regular and popular feature of Leamington Spa Art Gallery & Museum's (LSAG&M) programme since the 1930s.

An independent panel of judges will select artworks for exhibition and the winner of the Open 2024 Award. They will receive £1,000, a Spotlight exhibition at Leamington Spa Art Gallery & Museum and an opportunity to talk about their work at a Friday Focus talk. Visitors can vote for their favourite artwork, which will receive the People's Choice Award of £500. For entry information etc. click [HERE](#).

### Compton Verney

The Reflected Self: Portrait Miniatures, 1550-1850

Sat 21 September 2024 – Fri 21 March 2025

We are excited to be unveiling a new display featuring highlights from the Grantchester Miniatures Collection in our British Portraits gallery. The Grantchester Collection of portrait miniatures was gifted to Compton Verney in 2019. It is a highly personal collection that was developed by the late Lady Grantchester, the sister of our founder Sir Peter Moores. Showcasing over 40 exquisite and intriguing miniatures from the sixteenth, seventeenth and eighteenth centuries, this will be the first time that many of these works have been shown in public. The collection includes portraits in miniature by Isaac Oliver, Richard Cosway, George Engleheart and John Smart.



[DOWNLOAD PORTRAIT MINIATURES GUIDE](#)

## CWSA Member Events

### HERBERT ART GALLERY 'CASE' EXHIBITION

**CASE EXHIBITION FEBRUARY 2024** (Coventry Art Societies Exhibition). Feb 3<sup>rd</sup> – Mar 6<sup>th</sup> **Opening Night**



A good turnout for the opening night, it was a little busy, but great seeing so many people turning up, I'll give you a sales update in the next Brushstrokes edition.

Also a few words from Susan Moore, *When the Herbert asked me if I could invite other 'Warwickshire' Art Societies together with the Coventry art groups to submit for this year's CASE exhibition, I*

*said I would, not knowing what response I would receive. You may imagine, the exhibition was a lot of work as it involved 10 different art groups, 125 artists, 450 submissions and 270 works accepted.*

*Most of the submissions came in on email, and each one took me 10 - 15 minutes to deal with, reading it, downloading it, printing it, replying and sometimes having to go back to ask for it to be sent again, or even filling in a form for the artist.*

*If no one volunteers to organise the next CASE exhibition (year 2026?), I will ask artists to send submission forms in the 'old' fashioned method... by post. This would save hours (and hours) of work.*

*Selection Day went very well, considering the volume of artists and works. We had lots of great volunteers, and the Selection Panel asked the 'volunteers' to vote for them when it was one of their art society member's work.*

*All the staff at the Herbert have been brilliant and very supportive, in particular Kirstie who managed most of it. When I asked how many paintings we could accept, she replied as many as you want to as we will do 'salon' hanging. The result has been fantastic. Like the Summer Exhibition at the Royal Academy. I have received so many thank you's from artists who are delighted with the exhibition.*

*Thanks also to CWSA members, Katherine Bell who was previous CASE Treasurer, and Virginia Murphy who stepped in this time as Treasurer and sorted out all the Cash and BACs payments.*

### CWSA Award Winners

Chairman's Favourite Painting award: **Robin Beaully Austin**, (acrylic painting) Karl Olof. Karl Olof is a Nordic trapper and explorer, a solitary ex-military man who survives on his knowledge of the frozen seas. (He lost one eye and has a glass eye with skull).

Chairman's Favourite Sculpture award: **Marcus Miller**, (Bronze Resin) Joven Bailarina.



Most of the 'Commended' works were selected by Herbert Art Gallery personnel who were involved in displaying the exhibition.

**Rupert Cordeux** - (Watercolour), The Old Grammar School Stalls

**Cozmin Razvan Olalau**, (Oil) Struggles

**Maciej Platwa** (Acrylic) So Hold Me Mom

**Vesela Sultanova** (Oil) Unknown

**Vesela Sultanova** (Oil) Home (Lord Mayor's 2nd choice).

**Roger Chamley** (Oil) Lilly

**Janice Everton** (Silk Screen) Looking to the Future

**Emma Gluyas** (Oil and Cold Wax) Winter Lake

**Paul Anthony Goalby** (Oil on Cradled Panel) The Pipe Organ

**Julie Swinsco** (Oil) Nocturn Intersection

**Cliff Vince** (Stone Sculpture) Cresta

**Katy Walden** (Oil) Trio of Pears

(**Tina Watkins** won award for 2019 Visitor's Favourite Painting)

This was Robin Beaully Austin's response once he found out that he had been awarded the Chairman's Favourite Painting Award.

*WOW! I'm overwhelmed, I never thought I would get a painting accepted, I got all five and now the 'Chairman's Favourite Painting' thank you! This means so, so much to me. As a boy I used to wander round the Herbert looking at all the paintings and wishing one day mine would be up there.*

I can understand his response, I used to pop into the Herbert to see the many exhibitions and Natural History section when I was growing up in Coventry, just goes to show how important it is to have the enrichment of art in our home city.

## Exhibitions

BURTON GREEN WEEKEND EXHIBITION, Saturday 3rd August. Sunday 4th August.

Artists will be able to have their own display stand and table if they wish to, or exhibit individual paintings.

Private View to invite your friends and family, Saturday morning 10.30am

- 12pm. More information and submission form later.

## Workshops

(New) Diary Date: We have organised an all-day workshop with the brilliant, Tom Shepherd on 25th June. Stoneleigh Village Hall. Painting landscapes in acrylics.

More information later.

**JOHN FRITH** - Organises pen & wash workshops;

Contact John for more details: [johnfrith999@gmail.com](mailto:johnfrith999@gmail.com)

**EMMA GLUYAS** - Organises a wide range of different art classes and workshops in Coventry. Contact Emma for more details: [artyem@hotmail.com](mailto:artyem@hotmail.com)

**TANYA KOZIN** - Portrait and life drawing groups, plus sculpture workshops in the Earlsdon area. Contact Tanya for more details: [tatiana.kozin@gmail.com](mailto:tatiana.kozin@gmail.com)

**SUSAN MOORE** - Will arrange by request, small group Silk Painting workshops in Fillongley. Contact Susan for more details: [susan.k.moore@btinternet.com](mailto:susan.k.moore@btinternet.com)

**PURNINA PANCHAL** - Watercolour classes. Will arrange Zoom workshops// or at Burton Village Hall. Contact Purnina for more details: [ppanchal389@gmail.com](mailto:ppanchal389@gmail.com)

**SARAH HEDLEY** Watercolour and oil painting classes starting on September 26 in Earlsdon. Day time and Evenings. All abilities welcome. Expert qualified tuition. Booking essential to avoid disappointment. Call 07975714790 or Email [sarahruthhedley@yahoo.com](mailto:sarahruthhedley@yahoo.com)

The **WORKSHOP Morning with PHIL BIGGS** has been **cancelled** as it conflicted with the CASE exhibition in February, we will rebook Phil for the Autumn. Landscape/house portraits watercolour morning. (See his work - visit: [phil@heritgewatercolour.co.uk](mailto:phil@heritgewatercolour.co.uk))

**MARK WARNER** - who gave us excellent 'zoom' demonstrations during Covid, is organising painting workshops in Abergavenny, and also a painting holiday week in the Loire Valley next year. For more info: Email: [mark@brushmark.co.uk](mailto:mark@brushmark.co.uk)<mailto:[mark@brushmark.co.uk](mailto:mark@brushmark.co.uk)>

**JACQUI SMITHSON, Felting Workshops.** Learn how to make a simply shaped bowl using the wet felting technique in the colours of your choice. In this class you will be working with woollen batts which are much coarser than fine Merino tops. 9<sup>th</sup> May 2024 contact: [Jacqui.a.smithson@gmail.com](mailto:Jacqui.a.smithson@gmail.com)  
[www.jacquismithson.com](http://www.jacquismithson.com)

**VIRGINIA MURPHY, Felting Workshops** Virginia also runs workshops regularly in both wet and needle felting and glass painting. For more details on these please contact her on 07833 353872

## The Arts Society Coventry



Our next lecture will be given on Tuesday 26th February at 7pm (doors open for refreshments at 6.30pm). This month's speaker is Bertie Pearce and his topic is Punch and Judy – a subversive symbol from Commedia Del' Arte to the present day

You think you're not interested in Punch and Judy? You will be! Mr Punch is probably the most famous puppet character of all time. His comic irreverence gave Punch magazine its title. His anarchic vitality has inspired opera, ballet and punk rock and his enduring popularity has seen his likeness on goods ranging from Victorian silverware to computer video games. Appearing in England in 1662, Punch is descended from the Italian Clown Pulcinella of the 15th century Commedia Del' Arte tradition. Even today, this 'Lord of Misrule' uses his slapstick to dispense with oppressive authority, be it politicians, political correctness or the devil, while proclaiming his notorious refrain; 'That's the way to do it!'

The event is free to Arts Society members; £10 to non-members (£5 to students) including pre-lecture refreshments. For membership details, and further information, see [www.theartssociety.org/coventry](http://www.theartssociety.org/coventry)

@ The Theatre at Barr's Hill School, Radford Road,

Coventry, CV1 4BU. This has free onsite parking and is easy to get to. **TO JOIN**

**PLEASE CONTACT THE SOCIETY** **GET IN TOUCH**

Contact: [membership.coventry@theartssociety.org](mailto:membership.coventry@theartssociety.org)

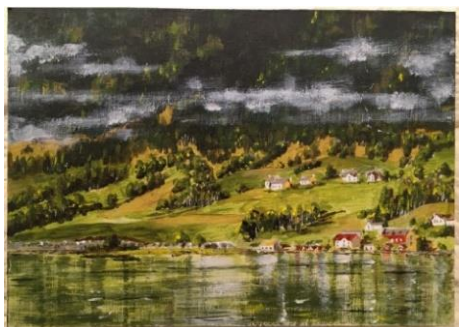
Website: <https://theartssociety.org/coventry>

## Art Exhibitions Reviewed by Trevor Bendell

In September I visited an exhibition of art held at All Saints Church, Victoria Terrace, Leamington Spa. This exhibition had been organised by the art group UK Artists, an organisation that promotes art through the representation of, in their words "...visual artists living and working all over the UK.", although, they are based in Warwickshire. You can find them online here: <https://www.ukartistsonline.com/home.aspx>

The Leamington spa exhibition had a wide range of art mediums including oil paintings, acrylics, watercolours, mixed-media, photographs and the odd 3D (sculpture) art, but, mostly 2D paintings. The art was mounted upon white stands laid out between the columns in the nave of the church, a display and a fitting setting





which seemed to suit the moment – quiet and relaxing – no lift muzak to speed you on your way to the checkout for a hurried purchase!

The church itself, which I had not been inside before, had interesting ecclesiastical architecture, with very tall columns and high ceiling and striking coloured stained-glass windows at the alter end. The photograph below on the left shows part of the art display near the entrance; note also the room behind that actually houses a café, possibly making a visit worthwhile, anyway.



The styles of painting varied from representational to abstract, thereby presenting the wide background of the artist's human exploration of the world seen through the artist's eyes.

All the artwork is for sale, with I note, all the artwork being reasonably priced – no Banksy's here then!

Apparently, there was also an annual prize giving session on the Saturday, and where you could 'meet the artist'. Interestingly, there is also a 'People's Prize', whereby visitors, before leaving the premises filled out a voting paper. I have included a photo to the left, of one of my No. 1 favourite choices: "Light House", oil & gold leaf on canvas, by Ruby Beau



UK Artists primarily function to represent and sell artists work, and so are open to new artists joining them, but, be aware there is a selection process – no doubt to prevent the 'riff-raff' from joining. And while they will sell your art they will also, if I understand correctly, take a commission.

## Patchings A5 Exhibition

The Patchings A5 Open Exhibition is apparently a well-known event in artistic quarters, and in December 2022 I made the journey to the North West of Nottingham to the rural site of Patchings Art Centre. For those not familiar with the event, the annual A5 exhibition is reference to miniature A5 sized canvases (not an A road route) that are displayed at Patchings by any artist, professional or amateur, to cares to exhibit. You, the budding artist sends a small fee (just £6 per entry) to Patchings and in return acquire a small A5 sized canvas(s) which, after completing your artwork, you return in the post to Patchings. Patchings then display all the received artwork – there is no selection process – throughout December. Best of all, all the artwork is for sale (each artist decides their own artwork price), and if sold, Patchings pay you with no commission taken.

The displayed artwork (it includes some photographs) is quite numerous and so, is actually spread throughout two different buildings. The range of different artistic subject, styles, techniques and ages of artists is huge: nobody is excluded, truly inclusive art. The prices of the artworks also varied – one of the reasons I visited the exhibition was to obtain an idea of how the art was priced as I had submitted two of my own compositions. This ranged from drawings submitted by children (often selling for £7.50p: a bargain!) to some highly superb skilled oil paintings selling for prices such as £140, £170.

'Fjord Morning', acrylic (not for sale), Sarah Hemmings

I have included some photographs of my favourites of the A5 exhibition. For future reference, and in case any of you wanted to know the typical 'going rate' for an A5 painting, I would say a typical price range was £20 (tended to be watercolours) to £35 pounds.

It is definitely worth a journey to Nottingham to view these A5 compositions, or for any other exhibition that could be held there, as there is always some form of art on display; useful to know is the fact that Painters Online (publishers of The Artist) hold their TALP Open Art Composition exhibition at the Patchings Art Centre. Patchings not only have an art shop selling art materials (a moderate range, that is perhaps a little pricey) and a great range of art books, but also, what I would guess is a good little café (well, judging by all the people in the café on a Wednesday afternoon). Trevor Bendell, BA (Hons), M.Arch



'Andalusian Sun' & 'Andalusian Ascent', oils, Clare Marti



A typical selection



'Tracks in the Snow', acrylic, David Green

## Exhibition Opportunities

# NEAC

New English Art Club

### **New English Art Club Annual Exhibition 2024**

*The NEAC Annual Exhibition is a showcase not only for its members but also for aspiring artists.*

THE NEW ENGLISH ART CLUB

Artists are invited to submit work for exhibition alongside members of the New English Art Club at the NEAC Annual Exhibition 2024.

[Full Details, Entry Terms & Conditions](#)

**OPEN FOR ENTRY** Entry Deadline: 08/03/2024, Midday



### **Society of Women Artists**

#### **(NON-Members Only) Society of Women Artists 163rd Annual Open Exhibition**

*A Platform for Outstanding Artists*

The SWA seeks works of the highest standard within its specific field. The SWA continues to promote female artists and prides itself on the very diverse nature of the work shown during our Annual Open Exhibition from both our non-members and our members.

[Full Details, Entry Terms & Conditions](#)

**OPEN FOR ENTRY** Entry Deadline: 12/03/2024, 5pm

### **Women in Art Fair 2024**

*Time for Unity*

Artists are invited to submit work for exhibition, alongside galleries, for the Women in Art Fair exhibition in October 2024.

Applications are now open, 12th January 2024 for Women In Art Fair London at the Mall Galleries. The fair will take place between the 9th and 12th October during the prestigious Frieze art week London - the deadline for submissions is the 5th of April 2024.

[Full Details, Entry Terms & Conditions](#)

**OPEN FOR ENTRY** Entry Deadline: 05/04/2024, Midnight

### **Society of Botanical Artists Plantae 2024**

*Exhibiting excellence in every botanical art form*

The Society invites artists to submit their very best work to our online exhibition. Whether an artist works in watercolour, oils, gouache, graphite, colour pencil or pen and ink, a botanical illustrator, printmaker,



ceramic artist, sculptor, jeweller or glass artist, we are seeking work with a strong exhibiting presence to be part of our online exhibition.

[Full Details, Entry Terms & Conditions](#)

**OPEN FOR ENTRY**

**Entry Deadline: 30/04/2024, Midnight**

### Chelsea Art Society 75th Annual Summer Exhibition



Over £8000 worth of prizes - [www.chelseaartsociety.org.uk](http://www.chelseaartsociety.org.uk)

**Call to Artists: Recent work CALLING ALL Painters, Sculptors, Draughtsmen, and Printmakers. Exhibit alongside CAS members and well-established artists at a buzzing Chelsea calendar event.**

#### PRIZES

Wedlake Bell Award for a Young Artist 35yrs and Under, Painting or Sculpture - £1500

Cadogan Award for Capturing Chelsea's Culture - £1000

[Full Details, Entry Terms & Conditions](#)

**OPEN FOR ENTRY**

**Entry Deadline: 29/04/2024, Midday 12noon**

### Belgrade Theatre Youth Forum are looking for art to be displayed as part of *In the Meantime We Try: A Festival of Stories and Action*, taking place on Sat 15 July 2023.

We would like to invite you to submit art (drawings, paintings, sketches) around the theme of **NATURE: HOW DOES IT MAKE YOU FEEL?** to display inside the Belgrade Theatre as part of the **HUBs** Festival.

You are free to interpret this theme as you wish, however, we cannot accept sculptures or pieces bigger than A3 due to the space available. Audiences will vote on their favourite and the winner will receive two free tickets to an upcoming Belgrade show.

If you would like to submit something, please email [hbarker@belgrade.co.uk](mailto:hbarker@belgrade.co.uk) with the following by Fri 30 June 2023:

- Your name, contact information and postcode
- The title of your artwork and one sentence about it
- A photo of your artwork
- The dimensions of your artwork

We then request all pieces be dropped off at Belgrade Theatre between 10am on Mon 3 July, and 12pm on Fri 7 July. All pieces can be returned after the display has finished.

*In The Meantime We Try* brings together the Belgrade Theatre with its communities to celebrate the work of its newly formed **HUBs** and Youth Forum. The festival gives voice to its **HUBs** members who seek to answer the question, 'What does it mean to be useful?' On Sat 15 July the Belgrade Theatre will open its doors once again for an immersive day of theatre performances, workshops, stalls, and artwork.

**For the latest information visit: <http://www.covwarsocart.co.uk> CWSA Contact: 07929849290 or e-mail [313vince@gmail.com](mailto:313vince@gmail.com)**